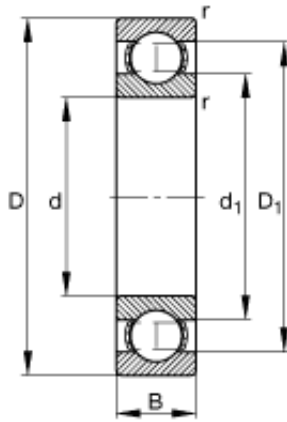




# NTN-CPC Australia Pty Ltd

## 50 mm x 90 mm x 20 mm FAG 6210 A/C Compressor clutches Bearing



Bearing No. 6210

6210 Bearing 2D drawings and 3D CAD models

Size	50x90x20 mm
Bore Diameter	50 mm
Outer Diameter	90 mm
Width	20 mm
d	50 mm
D	90 mm
B	20 mm
D <sub>1</sub>	77,9 mm
D <sub>a max</sub>	83 mm
d <sub>1</sub>	62 mm
d <sub>a min</sub>	57 mm
r <sub>a max</sub>	1 mm
r <sub>min</sub>	1,1 mm
m	0,466 kg / Weight
C <sub>r</sub>	39000 N / Dynamic load rating (radial)
C <sub>0r</sub>	24200 N / Static load rating (radial)
n <sub>G</sub>	10500 1/min / Limiting speed
n <sub>B</sub>	8200 1/min / Reference speed
C <sub>ur</sub>	1220 N / Fatigue limit load, radial